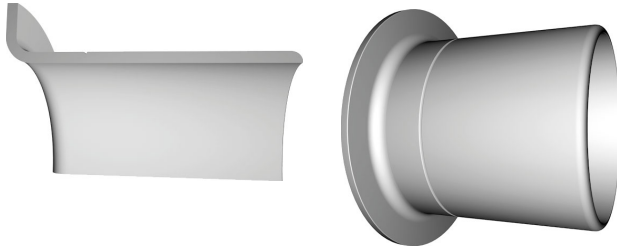


## SL-10



### Description

Shaft repair sleeves are metallic sleeves and are used as counterface replacement for radial shaft seals.

### Applications

- Shaft repair sleeves are pushed onto shafts to repair the worn counterface for radial shaft seals. They are a quick and cost-effective alternative to replacing or often costly reworking of the shaft.
- Shaft repair sleeves can also be used as original equipment to eliminate the need for costly machining of the shaft surface.

### Special features / advantages

- Quick and easy installation
- Cost-effective renewal of worn shaft surface
- Minimizes repair and downtime
- Thin wall thicknesses do not require a change in seal dimensions
- Precisely ground surface ensures long service life
- High availability for many common dimensions

### Technical data

Surface finish/ roughness	$R_a = 0.2 - 0.8 \mu\text{m}$ $R_z = 1 - 5 \mu\text{m}$ $R_{\text{max}} \leq 6.3 \mu\text{m}$
Surface machining	free of orientation, non-directionally ground
Surface hardness	HV 220 (95 HRB) wear-resistant machining
Wall thickness	0.28 mm (0.011 inch) thin-walled design

### Materials

Material sleeve	stainless steel 1.4301 (AISI 304)
Material assembly tool	Depending on version in standard steel / aluminium

### Application parameters

The operating parameters are specified by the seal and are usually not limited by the shaft sleeve.

### Assembly

Shaft sleeves can be installed quickly and easily using the supplied assembly sleeve. The notched, detachable assembly flange is easy to remove.

Assembly instructions are included in the packaging.

## Assembly

Shaft sleeves can be installed quickly and easily using the supplied assembly sleeve. The notched, detachable assembly flange is easy to remove. Assembly instructions are included in the packaging.

- Clean the worn counterface surface on the shaft. Remove unevenness with emery fleece or a fine file.
- Measure the diameter of the seal counterface surface in an undamaged area. Select the suitable sleeve size based on this value.
- Place the sleeve on the top of the shaft with the flange first.
- Place the supplied assembly sleeve against the flange of the sleeve. If the assembly sleeve is too short, a pipe can be used instead.
- Gently tap the centre of the assembly sleeve until the sleeve covers the worn area.
- The sleeve flange does not need to be removed unless it interferes with the application. If it must be removed, a cut should be made in the sleeve flange before assembly. The cut should end at the tearing groove. The pre-cut process and the flange removal must be done carefully to avoid damaging the outside diameter of the sleeve.
- Check again if there are burrs on the sleeve that could damage the seal.
- Lubricate the sleeve.
- Proceed with the installation of the seal.

